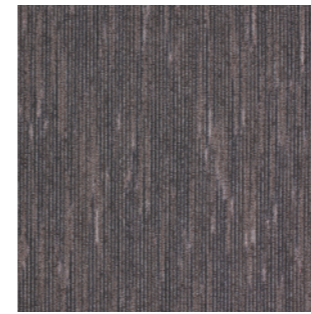


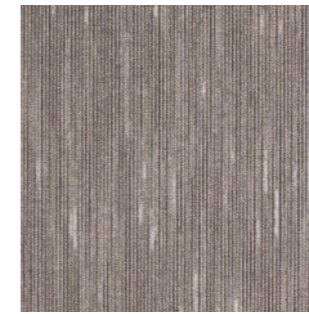
Workspace Linear



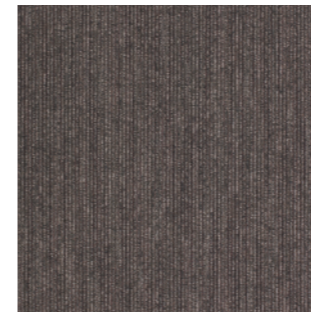
Islington Tunnel 5014



Islington Tunnel 5014
LRV - 5.54



Nobu Grey 7002
LRV - 15.67



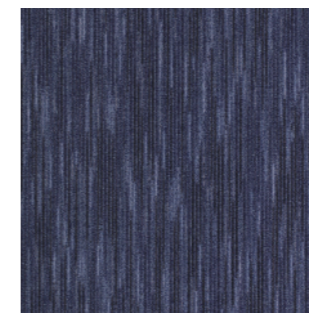
Docklands Grey 3013
LRV - 9.01



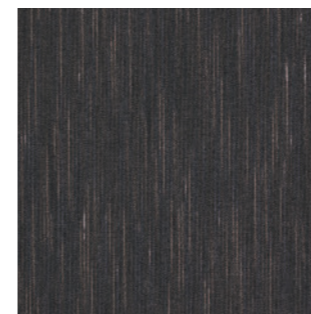
Apollo Blue 5004
LRV - 4.42



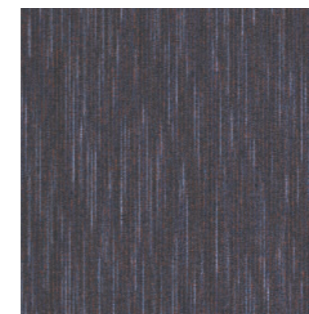
Millennium Blue 3001
LRV - 8.18



Regents Canal 4018
LRV - 5.12



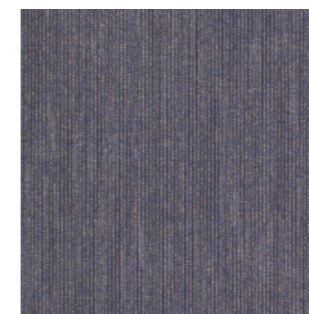
Victoria Blue 5181
LRV - 2.92



Clockhouse Blue 4009
LRV - 3.72



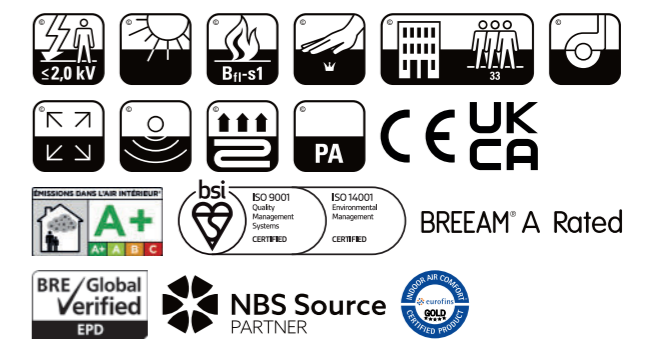
Westow Park Plum 3016
LRV - 7.50



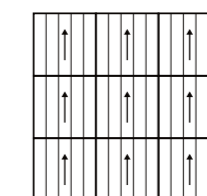
Broadway 3012
LRV - 8.17

Specification

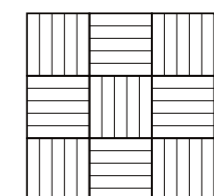
Style	Tufted 1/10" Gauge Loop Pile Tile
Yarn Construction	100% Solution Dyed / Space Dyed Nylon
Pile Yarn Weight	600g/m ²
Pile Height	3mm
Total Weight	4390g/m ²
Total Thickness	6mm
Backing	100% Envirobase – minimum of 75% recycled material
Additional Backing	Komfort Bac available on request
Tile Size	50cm x 50cm
Tiles Per Box	20 (5m ²)
Wear Classification	Heavy Contract Class 33
Luxury Class	LC1
Anti-Static	Suitable for use with computers. Less than 2Kv
Colour Fastness	Light (BS EN ISO 105:B02) >6 Shampoo (BS 1006:UK-TB:1990) 4-5 Dry Rubbing (BS EN ISO 105:B01) 4-5 Wet Rubbing (BS EN ISO 105:X12) 4-5
Flammability	BS5287 Assessment and labelling of Textile Floorcovering tested to BS4790 (Hot Metal Nut Test) – Low Radius of Char
BS EN 13501	Class Bfl-s1
Impact Noise Reduction	26dB
Castor Chair Test	Suitable for intensive use with castor chairs
Warranty	10 years
VOC Content	E1 in relation to EN 14041:2004
Environmental Status	BREEAM® A Rated



Laying Patterns



Broadloom



Tessellated

To see the true colour representation of the product, please refer to the shade card or request a sample, since monitors and lighting can affect the overall appearance of the colour/ tile.

Cleaning & Maintenance

To maximise the carpet's aesthetic appeal, performance and life expectancy, it is imperative to ensure at the specification stage that:

1. Carpets will be protected from other site activities during installation and thereafter.
2. Clients understand the enclosed information and that they accept responsibility for correct carpet care.
3. Carpets are protected from excess soiling or moisture in entrance areas, by use of an effective barrier material such as those from the Mat.Works range.

General Cleaning

Daily vacuuming with a twin motored upright vacuum cleaner, preferably with an adjustable head, is recommended. It is essential to remove all loose soil daily because if left to build up, the particles of dirt are much harder to remove and are more damaging to the fibre structure, thereby decreasing the life of the carpet.

Attention should be given to areas where there is extra traffic and in entrances to buildings where extra vacuuming is necessary.

Depending on the level of installation trafficking, the carpet should be periodically deep cleaned using high performance hot water extraction equipment.

Rotary brush cleaning not recommended.

A reputable contract cleaner should be used, preferably NCCA registered (for NCCA details visit www.ncca.co.uk). It is important that the carpet is deep cleaned at least once a year.

Stain Removal

It is essential to deal with spillages immediately and any subsequent stains as appropriate.

In the event of a spillage, immediately blot with a clean absorbent cloth until there is no further transfer from the carpet to the cloth. If any further stain remains or has otherwise been allowed to dry, the method will vary accordingly.

It is recognised that particularly for contract situations, if stains are not dealt with immediately, cleaning staff may not be in a position to identify the type of stain. A good quality, multi-purpose stain remover is therefore very useful, although it must be understood that this will not successfully tackle all types of stains, and wherever possible the chart recommendations should be strictly followed.

Also any stains left over a period of time become increasingly more difficult to remove and may require several treatments.

In all cases, after stain removal, the carpet should be allowed to dry completely and then cleaned with a twin motored upright vacuum cleaner.

Solvent cleaning of bitumen backed tiles should preferably be avoided. Where this is not possible, extra caution should be taken and only very light surface cleaning should take place.

If any of the treatments listed are not successful, seek professional help.

The methods are recommended in good faith; however, we cannot accept responsibility for their use in any specific case.

Stain Type

Stain Removal Procedure

**Tea / Coffee
Food
Fountain Pen Ink
Water Based Paint**

A liquid detergent solution such as Granwax Ezee Spot & Stain Remover.

Apply the solution to the stained area. Lightly agitate affected areas & remove by use of absorbent cloth.

Stubborn stains may require a second application.

Chewing Gum

Apply chewing gum remover then break-up and remove pieces or pierce gum with fork or Prochem Perforator Block then apply Citrus Gel or Solvall Spotter and leave for a few minutes. Remove softened gum with spatula or blunt knife. For large areas apply Bazooka Gum Remover in conjunction with Bazooka Gum Removal Machine.

Grease

Scrape up excess, hardened residue prior to wetting. Apply Solvex or Solvall Spotter and blot. Apply Citrus Gel and blot. Apply Stain Pro and blot. For larger areas apply Power Burst then rinse extract thoroughly.

Ink (solvent soluble)

Apply Solvex and blot – do not rub. Repeat as needed. If stain persists, apply Citrus Gel. Rinse thoroughly with water and blot until dry.

Note: All inks are not the same and different approaches may have to be evaluated.

Milk

Apply Stain Pro and blot. Apply Fibre & Fabric Rinse solution and blot until dry. If stain persists apply Solvex or Citrus Gel and blot. Apply Neutral Pro-Spotter and blot. Rinse thoroughly with water and blot until dry.

Oils

Apply Solvall Spotter and blot or apply Citrus Gel and blot or apply Solvex and blot until dry. Where a solvent cannot be used apply Power Burst solution, brush and rinse with Fibre & Fabric Rinse solution.

Oil Based Paint / Varnish

Apply Solvall Spotter and blot or apply Citrus Gel and blot or apply Solvex and blot. Re-apply Solvex until as much paint as possible is removed then weight down the stain with towels for several hours to loosen. Apply Neutral Pro-Spotter, work into stain then blot. Rinse thoroughly with water and blot until dry.

Shoe Polish

Apply Solvex or Solvall Spotter & blot. Apply Citrus Gel & blot. Rinse thoroughly with water & blot until dry.

Tar & Asphalt

Scrape off as much as possible with blunt knife. Apply Solvall Spotter or Solvex and blot. Apply Citrus Gel and blot. Apply Neutral Pro-Spotter and blot then rinse thoroughly with water and blot until dry.

Health and Safety

Please ensure that for all above referenced items, the manufacturers' use & safety instructions are adhered to.

Granwax Ezee Spot & Stain Remover can be obtained from Granwax Products Ltd; telephone 01773 541177

Other products listed can be obtained from Prochem Europe Ltd; telephone 020 8974 1515